

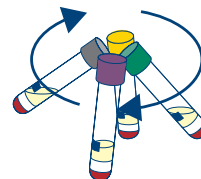
QuantiFERON®-TB Gold Plus — assay

Option 1: Receive incubated tubes

1. Centrifuge tubes.

Centrifuge tubes at 2000–3000 x g (RCF) for 15 minutes.

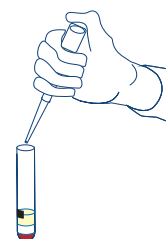
- Centrifuged tubes should be handled with care to avoid mixing of plasma.
- Plasma in centrifuged tubes is stable for up to 28 days when stored at 2–8°C.



2. Harvest plasma.

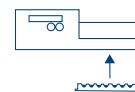
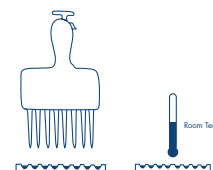
After centrifugation and prior to harvesting, avoid pipetting up and down or mixing plasma by any means. At all times, take care not to disturb material on the surface of the gel.

- Plasma samples should be harvested only using a pipet.
- Plasma samples can be loaded directly from centrifuged blood collection tubes into the QFT®-Plus ELISA plate, even when automated ELISA workstations are used.
- Plasma samples can be stored for up to 28 days at 2–8°C or, if harvested, below –20°C for extended periods.



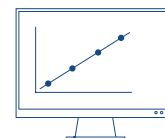
3. Perform ELISA.

- Add 50 µl of working-strength conjugate to each well of the QFT-Plus ELISA plate.
- Add 50 µl of test plasma or standards to the appropriate wells. Incubate for 120 minutes at room temperature ($22^{\circ}\text{C} \pm 5^{\circ}\text{C}$).
- Wash plate ≥ 6 times. Add 100 µl of substrate solution. Incubate for 30 minutes at room temperature.
- Add 50 µl of stop solution. Read absorbance at 450 nm (620–650 nm ref).



4. Calculate results.

Calculate results using the most current version of the QuantiFERON-TB Gold Plus Analysis Software for your region, available for download at www.QuantiFERON.com.



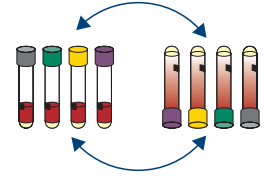
WARNING: Standard blood handling precautions apply.

See reverse side for instructions if receiving unincubated tubes. For comprehensive instructions for use, refer to the QFT ELISA package insert, available in multiple languages, at www.QuantiFERON.com.

Option 2: Receive unincubated tubes

1. Invert, incubate, and centrifuge tubes.

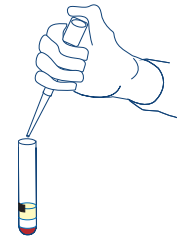
- Invert tubes 10 times.
- Incubate tubes upright at $37^{\circ}\text{C} \pm 1^{\circ}\text{C}$ for 16–24 hours.
- Centrifuge tubes at $2000\text{--}3000 \times g$ (RCF) for 15 minutes.
 - Centrifuged tubes should be handled with care to avoid mixing of plasma.
 - Plasma in centrifuged tubes is stable for up to 28 days when stored at $2\text{--}8^{\circ}\text{C}$.
 - If a generic lithium heparin tube is received, refer to the QFT-Plus ELISA package insert for instructions.



2. Harvest plasma.

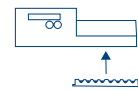
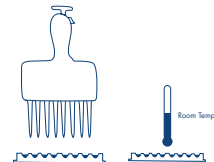
After centrifugation and prior to harvesting, avoid pipetting up and down or mixing plasma by any means. At all times, take care not to disturb material on the surface of the gel.

- Plasma samples should be harvested only using a pipet.
- Plasma samples can be loaded directly from centrifuged blood collection tubes into the QFT-Plus ELISA plate, even when automated ELISA workstations are used.
- Plasma samples can be stored for up to 28 days at $2\text{--}8^{\circ}\text{C}$ or, if harvested, below -20°C for extended periods.



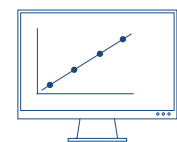
3. Perform ELISA.

- Add $50 \mu\text{l}$ of working-strength conjugate to each well of the QFT-Plus ELISA plate.
- Add $50 \mu\text{l}$ of test plasma or standards to the appropriate wells. Incubate for 120 minutes at room temperature ($22^{\circ}\text{C} \pm 5^{\circ}\text{C}$).
- Wash plate ≥ 6 times. Add $100 \mu\text{l}$ of substrate solution. Incubate for 30 minutes at room temperature.
- Add $50 \mu\text{l}$ of stop solution. Read absorbance at 450 nm ($620\text{--}650 \text{ nm ref}$).



4. Calculate results.

Calculate results using the most current version of the QuantiFERON-TB Gold Plus Analysis Software for your region, available for download at www.QuantiFERON.com.



WARNING: Standard blood handling precautions apply.

See reverse side for instructions if receiving incubated tubes. For comprehensive instructions for use, refer to the QFT-Plus ELISA package insert, available in multiple languages, at www.QuantiFERON.com.

Trademarks: QIAGEN®, Sample to Insight®, QFT®, QuantiFERON® (QIAGEN Group). Registered names, trademarks, etc. used in this document, even when not specifically marked as such, are not to be considered unprotected by law. 1 099503 02/2016 PROM-7789-003 © 2016 QIAGEN, all rights reserved.

Ordering www.qiagen.com/contact | Technical Support support.qiagen.com | Website www.qiagen.com